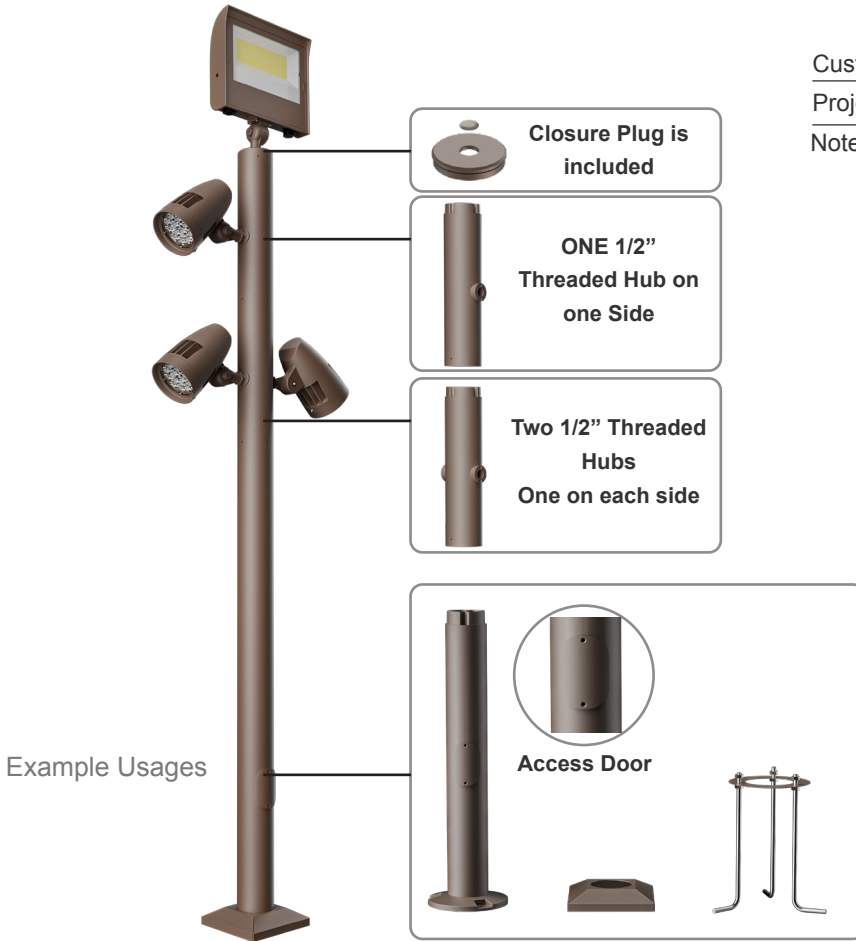


Customer Name: _____

Project Name: _____

Note: _____ | Type: _____



Example Usages

Bollards are designed for walkways, entrance ways, drives and other small-area lighting applications where low mounting heights are desirable

Features

- Corrosion Resistant Aluminum For Exterior
- 7-Year Warranty

Technical Specifications

Mechanical:

- Corrosion Resistant Aluminum for Exterior
- Total Allowed Built Height: 10FT
- Access door is on the Bases for Wiring and Maintenances
- Operating Temperature: -40°F to 113°F
- 7 Years Warranty
- IP Rating: IP65, Wet Locations

Applications:

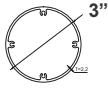
- Bollards are designed for walkways, entrance ways, drives and other small-area lighting applications where low mounting heights are desirable

Accessories:

Blank = No Option For Accessories

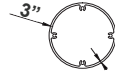
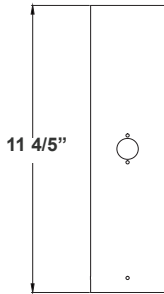
- BPS-BASE-2FT = Bollard Pole System 2Ft Base, incl. anchor bolts, base cover, top cap
- BPS-BASE-3FT = Bollard Pole System 3Ft Base, incl. anchor bolts, base cover, top cap
- BPS-BASE-5FT = Bollard Pole System 5Ft Base, incl. anchor bolts, base cover, top cap
- BPS-LH1 = Bollard Pole System Single Lamp Holder Section 1Ft With 1/2" Hub
- BPS-LH2 = Bollard Pole System Double Lamp Holder Section 1Ft With 1/2" Hubs
- BPS-EP-1FT = Bollard Pole System 1Ft Extension Pole
- BPS-EP-2FT = Bollard Pole System 2Ft Extension Pole
- BPS-LHT = Bollard Pole System Top Cap Lamp Holder With 1/2" Hub





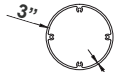
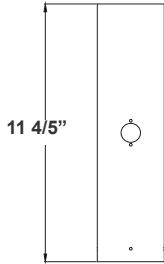
BPS-LHT
1 2/3"(H) x 3"(D)

Closure Plug is included



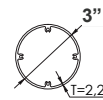
BPS-LH1
11 4/5"(H) x 3"(D)

ONE 1/2" Threaded Hub on one Side

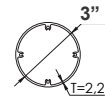
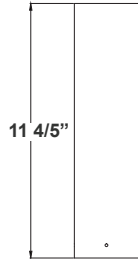


BPS-LH2
11 4/5"(H) x 3"(D)

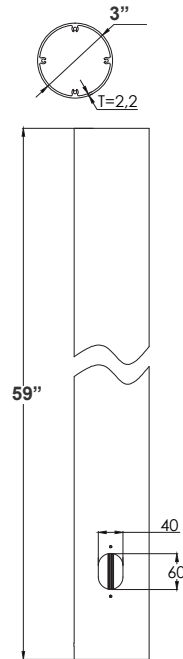
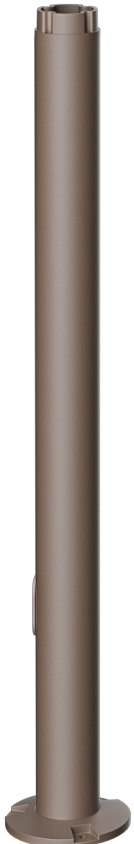
Two 1/2" Threaded Hubs
One on each side



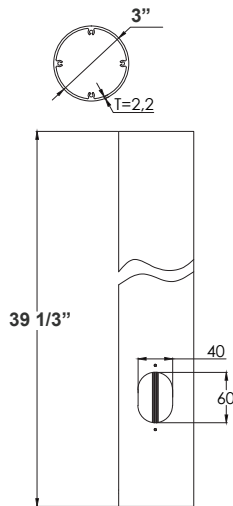
BPS-EP-2FT
23 3/5"(H) x 3"(D)



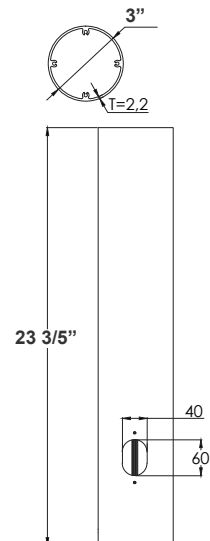
BPS-EP-1FT
11 4/5"(H) x 3"(D)



BPS-BASE-5FT
59"(H) x 3"(D)



BPS-BASE-3FT
39 1/3"(H) x 3"(D)



BPS-BASE-2FT
23 3/5"(H) x 3"(D)



Base Cover, Anchor Bolt, & Top Cap
Included with each base



EPA Rating:

EPA of BPS Series

Height Model	1.6M For example: BPS-BASE-3FT(0.9M) +BPS-LH1(0.3M) +BPS-LH2(0.3M) +BPS-LHT(Around 0.1m)	1.9M For example: BPS-BASE-3FT(0.9M) +BPS-LH1(0.3M) +BPS-LH2(0.3M) +BPS-EP-1FT(0.3M) +BPS-LHT(Around 0.1m)	2.2M For example: BPS-BASE-3FT(0.9M) +BPS-LH1(0.3M) +BPS-LH2(0.3M) +BPS-EP-2FT(0.6M) +BPS-LHT(Around 0.1m)	2.5M For example: BPS-BASE-5FT(1.5M) +BPS-LH1(0.3M) +BPS-LH2(0.3M) +BPS-EP-1FT(0.3M) +BPS-LHT(Around 0.1m)	2.8M For example: BPS-BASE-5FT(1.5M) +BPS-LH1(0.3M) +BPS-LH2(0.3M) +BPS-EP-2FT(0.6M) +BPS-LHT(Around 0.1m)
BPS with five fixtures	2.75	3.01	3.3	3.6	3.9

Configuration Components	Total Height (ft)	Total Weight (lbs)	EPA (sq.ft)	Wind Load (kg)
BPS-BASE-2FT	2.0	5.7	0.9	54.0
BPS-BASE-3FT	3.0	6.0	1.2	72.0
BPS-BASE-5FT	5.0	7.3	1.5	90.0
BPS-BASE-2FT + BPS-EP-1FT	3.0	7.4	1.2	72.0
BPS-BASE-2FT + BPS-EP-2FT	4.0	7.52	1.5	90.0
BPS-BASE-3FT + BPS-EP-1FT	4.0	7.7	1.5	90.0
BPS-BASE-3FT + BPS-EP-2FT	5.0	7.82	1.8	108.0
BPS-BASE-5FT + BPS-EP-1FT	6.0	9.0	2.0	120.0
BPS-BASE-5FT + BPS-EP-2FT	7.0	9.12	2.2	132.0
BPS-BASE-2FT + BPS-LH1	3.0	7.4	1.2	72.0
BPS-BASE-2FT + BPS-LH2	3.0	7.4	1.2	72.0
BPS-BASE-2FT + BPS-RBC	2.0	7.7	0.9	54.0
BPS-BASE-3FT + BPS-LH1	4.0	7.7	1.5	90.0
BPS-BASE-3FT + BPS-LH2	4.0	7.7	1.5	90.0
BPS-BASE-3FT + BPS-RBC	3.0	8.0	1.2	72.0
BPS-BASE-5FT + BPS-LH1	6.0	9.0	2.0	120.0
BPS-BASE-5FT + BPS-LH2	6.0	9.0	2.0	120.0
BPS-BASE-5FT + BPS-RBC	5.0	9.3	1.5	90.0
BPS-BASE-2FT + BPS-EP-1FT + BPS-LH1	4.0	9.1	1.5	90.0
BPS-BASE-2FT + BPS-EP-2FT + BPS-LH1	5.0	9.22	1.8	108.0
BPS-BASE-3FT + BPS-EP-1FT + BPS-LH1	5.0	9.4	1.8	108.0
BPS-BASE-3FT + BPS-EP-2FT + BPS-LH1	6.0	9.52	2.0	120.0
BPS-BASE-5FT + BPS-EP-1FT + BPS-LH1	7.0	10.7	2.2	132.0
BPS-BASE-5FT + BPS-EP-2FT + BPS-LH1	8.0	10.82	2.5	150.0



COLOR CHART: * Choose from one of our Premium Colors with no set-up fee.

Gloss:



SILVER METALLIC
70 GLOSS
T357-GR105



SILVER METALLIC
30 GLOSS
T353-GR06



DARK RED 90
GLOSS
P009-RD02



INTERNATIONAL
ORANGE 90
GLOSS
T009-OG26



SAFETY ORANGE
90 GLOSS
T009-OG01



YELLOW 90
GLOSS
T009-YL14



YELLOW 90
GLOSS
T009-YL01



TRAFFIC GREEN
70 GLOSS
T007-GN16



GREEN 70 GLOSS
T007-GN13



GREEN 60 GLOSS
C006-GN03



BLUE 90 GLOSS
T009-BL01



DARK BLUE 80
GLOSS
T008-BL20



RAL 8028 TERRA
BROWN 90 GLOSS
C209-BR358

Hammer:



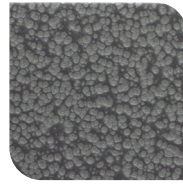
WHITE HAMMER
T013-WH09



BEIGE HAMMER
T013-BG38



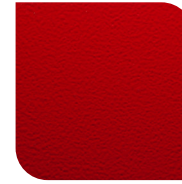
GREY HAMMER
C013-GR08



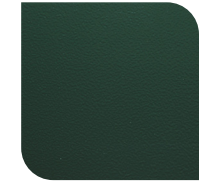
SILVER
HAMMERTONE
T064-GR05



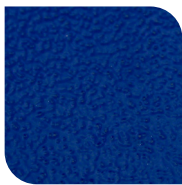
BLACK HAMMER
T013-BK62



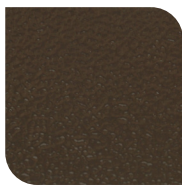
RED HAMMER
T013-RD15



GREEN HAMMER
T013-GN220



BLUE HAMMER
T013-BL468



BRONZE HAMMER
T012-BR161

Texture:



WHITE TEXTURE
C031-WH120



FLINT GRAY
TEXTURE
T243-GR522



BLACK TEXTURE
C241-BK109



RED TEXTURE
T241-RD129



BLUE TEXTURE
C241-BL544

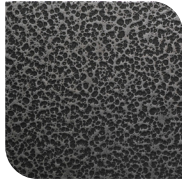


OIL RUBBED
BRONZE TEXTURE
T291-BR251

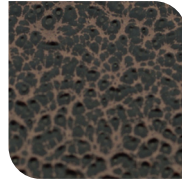
Vein:



BLACK/WHITE
VEIN
T075-WH34



SILVER VEIN
T375-BK26



COPPER VEIN
EXTERIOR
T075-BK211



GOLD VEIN
T375-BK10



COPPER VEIN
T375-BK07

